



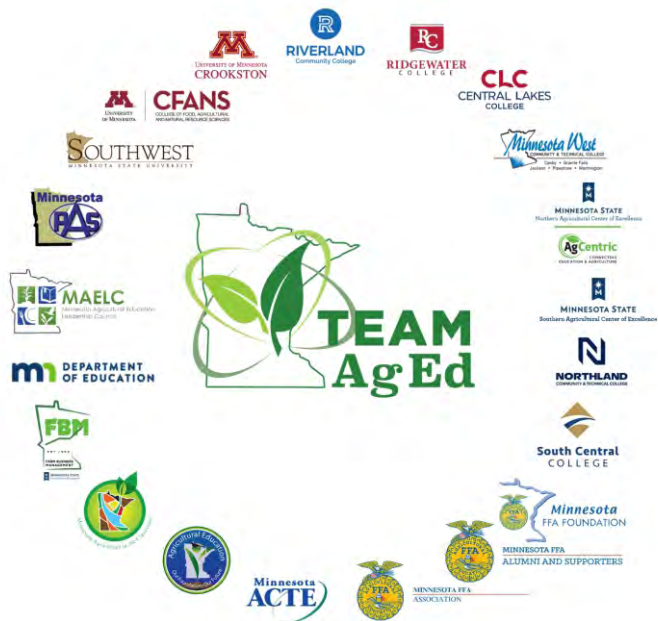
Star Partner Program

“ Our partners make an incredible impact on students every day by helping to ensure that critical programming to support agricultural education is available.”



The Minnesota FFA Foundation is proud to be a part of Minnesota's Team Agricultural Education/Team Ag Ed. The Minnesota FFA Foundation actively supports the valuable work many of these organizations do to help students develop the skills they need for agricultural careers and to be leaders for their local communities.

Team Ag Ed is a collaborative effort connecting the leading agriculture education organizations in Minnesota. Its goal is to coordinate strategies to guide agricultural education today and into the future. The team is made up of various organizations, the following are currently part of the Minnesota FFA Foundation Star Partner program.



Minnesota FFA Association

With a membership of over 16,000 students, the FFA provides opportunities to develop leadership skills through Career and Leadership Development Events, conferences, and individualized learning through Supervised Agricultural Experience programs. State-wide, there are over 210 FFA chapters.



Minnesota FFA Alumni Association

The Minnesota FFA Alumni Association provides training for local alumni members, helping them develop advocacy and program skills to assist with their local FFA chapter. Alumni chapters are key in providing programs and financial support for the agricultural education program in their community. There are 13,000 FFA Alumni

members state-wide.

Minnesota FFA Foundation

The Foundation serves to secure resources for the FFA and other partners of Team Ag Ed. These resources include financial support and other in-kind support that advances agricultural education in Minnesota.

Professional Agricultural Student Organization (PAS)

The Professional Agricultural Student Organization provides opportunities for a membership of over 300 students at technical and community colleges, as well as four-year universities, offering individual growth, leadership, and career preparation opportunities for students in professional agriculture.

Minnesota Association of Agricultural Educators (MAAE)

The Minnesota Association of Agricultural Educators is an organization of nearly 400 teachers of agriculture at the high school, post-secondary, and adult levels who seek to advance agricultural education in Minnesota. MAAE provides professional development and leadership opportunities for its members.



Agricultural Education Teacher Preparation Programs

Undergraduates and graduate students, faculty, and staff are involved with academic, leadership and personal development as they prepare for an Agricultural Education career at one of our three state universities offering a degree in Agricultural Education. Our university partners include the University of Minnesota-Crookston, University of Minnesota-Twin Cities, and Southwestern Minnesota State University (SMSU).

The Minnesota FFA Association has been a major part of the spirit of Minnesota youth and agricultural education for nearly 95 years. Everyday agricultural education state-wide makes a positive difference in the lives of over 40,000 students by developing their potential for premier leadership, personal growth, and career success through comprehensive hands-on training programs.

We're excited to offer an opportunity for you to begin or expand your partnership with the FFA and fellow Team Ag Ed organizations through the Minnesota FFA Foundation Star Partner Program.

Participating in the Minnesota FFA Foundation Star Partner Program is a great way for businesses and organizations to support these valuable programs. This is more than traditional sponsorship. This partnership provides yearlong recognition for your support with key agricultural education stakeholders, while providing agricultural education organizations with the support they need to provide quality programming to students state-wide. Support goes beyond the students, providing programming to students, teachers, and supporters, ensuring that programs are successful in serving their members.

The program is designed with varying levels of participation, affording you the flexibility to choose

your level of sponsorship through the Minnesota FFA Foundation, and helping us meet general operating and special project needs.

A cooperative effort, under the direction of the Minnesota FFA Foundation, the Minnesota FFA Foundation Star Partner Program involves the Minnesota Association of Agricultural Educators (MAAE), the Minnesota FFA Association, Minnesota FFA Alumni Association, Professional Agricultural Student (PAS) Organization, agricultural education through our university partners, including the University of the Minnesota – Twin Cities, University of Minnesota–Crookston and Southwestern Minnesota State University (SMSU) and the Minnesota FFA Foundation. Each will promote your sponsorship and support of agricultural education as outline in our sponsorship options.

The Star Partner Program is designed to promote those businesses and organizations supporting the longevity and growth of Minnesota FFA.

Your participation helps secure a strong financial future for Minnesota FFA and agricultural education in Minnesota. You can help us ensure all agricultural education programs in Minnesota are funded and that the 40,000 plus students involved in agricultural education today, and the thousands to come, benefit.



“FFA has helped me become a more well-rounded and confident individual. By participating in CDEs like Food Science and taking on leadership roles like Chapter Treasurer, I have grown tremendously and learned valuable skills that will benefit me in my future. I am beyond grateful for the endless opportunities and connections FFA and Agricultural Education have provided me!”

HELENA AKLOG
Highland Park FFA Member



“Our partners make an incredible impact on my students every day by helping to ensure that critical programming to support Agricultural Education is available to my students and myself. Leadership development opportunities are accessible for all my students and professional development and support is available to me and over 300 educators throughout Minnesota.”

ERIC SAWATZKE
West Central Area Agricultural Education Instructor



“Having benefited from being involved in FFA as a youth, and the extraordinary agriculture educators I had access to, as well as knowing the impact strong agricultural educators and the FFA program can have on today's youth, makes it easy to support the MN FFA Foundation Star Partner Program. These young people are the next generation of agricultural leaders and industry professionals. We feel it's our responsibility as an organization representing the state's grain and feed industry to support agricultural education and Minnesota FFA members.”

LAURA LEMKE
Minnesota Grain & Feed Association Executive Director

Star Partner Program Sponsorship Agreement



*Indicates 5-state event

RECOGNITION AREA

★
ONE
STAR
\$3,000

★★
TWO
STAR
\$6,000

★★★
THREE
STAR
\$10,000

★★★★
FOUR
STAR
\$15,000

★★★★★
FIVE
STAR
\$20,000

★
DISTINGUISHED
STAR
\$25,000

MINNESOTA FFA ASSOCIATION

Licensing Agreement for use of FFA emblem/marks.	X	X	X	X	X	X
Recognition as Partner in Minnesota FFA Publication	X	X	X	X	X	X
Listing on Minnesota FFA Website	X	X	X	X	X	X
Star Partnership Signage indicating level	X	X	X	X	X	X
Advertisement in Minnesota FFA Publication	1/4 PG	1/4 PG	1/2 PG	1/2 PG	1 PG	1 PG
Proficiency or other award sponsor for State Convention		X	X	X	X	X
Washington Leadership Conference Scholarship Sponsor			X	X	X	X
State Greenhand Leadership Camp Sponsor				X	X	X
State Leadership Camp for Chapter Leaders Sponsor				X	X	X
Support of Chapter Grants				X	X	X
Collegiate Member Connections					X	X
Minnesota State FFA Convention Major Sponsor						X
30 second commercial shown during State FFA Convention						X
Blue Jackets-Bright Future Program	1 Jacket	2 Jackets	3 Jackets	4 Jackets	5 Jackets	6 Jackets

MINNESOTA FFA FOUNDATION

Listing on Minnesota FFA Foundation Star Partners Program Website	X	X	X	X	X	X
FFA Day Event Sponsor *	X	X	X	Home Run Level	Home Run Level	Home Run Level
MN FFA Foundation Golf Tournament Hole Sponsorship	X	X	X	X	X	X
Ag Career Fair Exhibit Space State FFA Convention	X	X	X	X	X	X
FFA State Fair Program Sponsor		X	X	X	X	X

MINNESOTA FFA ALUMNI

Alumni State Convention Major Sponsor	X	X	X	X	X	X
Alumni Affiliate Program Development Sponsor		X	X	X	X	X
Alumni Annual Conference Sponsor			X	X	X	X
Alumni National Convention Delegate Sponsor					X	X

MINNESOTA ASSOCIATION OF AGRICULTURAL EDUCATORS (MAAE)

MAAE Summer Conference Exhibit Space	X	X	X	X	X	X
Advertisement in MAAE Ag in Action Magazine	1/4 page 1 issue	1/4 page 3 issues	1/2 page 3 issues	1 page 1 issue	1 page 3 issues	1 page 3 issues
MAAE Summer Conference Break Sponsor		X	X	X	X	X
MAAE Ag Tech Conference Exhibit Space		X	X	X	X	X
MAAE Summer Conference Major Sponsor			X	X	MAJOR	MAJOR

AGRICULTURAL EDUCATION AT TEACHER PREPARATION PROGRAMS

Ag Ed Leadership Development	X	X	X	X	X	X
Ag Ed Student Teaching Scholarships		X	X	X	X	X
Ag Ed Cooperating Teacher Honorarium		X	X	X	X	X
Ag Ed Academic Development			X	X	X	X

PROFESSIONAL AGRICULTURAL STUDENT ORGANIZATION (PAS)

PAS State Conference Sponsor	X	X	X	X	X	X
PAS Event Sponsor		X	X	X	X	X
PAS State Officer Training			X	X	X	X
PAS National Conference Support					X	X

Disclaimer: Funds received through the Minnesota FFA Foundation's Star Partner program will be used to meet the costs associated with the mission of the Minnesota FFA Foundation. Any funds raised in excess of special projects, convention or conference costs will be used to accomplish the mission of the Minnesota FFA Foundation. The mission of the Minnesota FFA Foundation is to secure strategic partnerships and financial resources that promote and enhance premier leadership, personal growth, and career success for Minnesota youth in

agricultural education. This program provides businesses, associations, other foundations and individuals the opportunity to support FFA and partners of Minnesota Team AgEd through special projects of the Minnesota FFA Foundation. Sponsorship recognitions by the Minnesota FFA Foundation do not constitute an endorsement of the Foundation of the products or services of the sponsoring company, organization or individual. The Minnesota FFA Foundation maintains the right to make modifications to the program.

Summary of Partnerships Guidelines & Contingencies

Partnership participation is based on an annual gift of the amount designated for each level of sponsorship recognition.

Exclusive agreements are on a first-come basis and are negotiated separately with the Minnesota FFA Foundation.

Basic Licensing Agreement

For companies who use the FFA emblem for local, regional, or state promotions, a basic licensing agreement is available for the Minnesota FFA Association for a fee of \$500. The word "Minnesota" would need to appear above the FFA emblem.

Guidelines and Contingencies

The Minnesota FFA Foundation Star Partner Program is designed to encourage optimum promotion for your support of Minnesota FFA and Team Ag Ed programs. To

assist in helping us reach other promotional strategies of the program, a short list of guidelines has been developed to help communicate the suspense dates necessary for a successful program. To ensure the highest levels of service, trust and integrity, participants are asked to honor the suspense dates for the greatest program rapport.

Once a letter of commitment has been signed and agreed upon, the sponsorship funds must be received within 30 days. If the date is not met, the Minnesota FFA Foundation has the right to refuse further recognition at agreed upon level of sponsorship and may choose to terminate the partnership.

All rules, guidelines, and requirements for usage of the FFA logo, marks and emblems are at the direction of the Minnesota FFA Association as outlined by National FFA policies and procedures for the period of this agreement. A licensing agreement will be provided in conjunction with the Minnesota FFA Association for participating partners. The Minnesota FFA Foundation is a nonprofit organization. Contributions are tax deductible.



Star Partner Program Sponsorship Agreement

ALL SPONSORS RECEIVE

Summary of Partnerships Guidelines & Contingencies

Partnership participation is based on an annual gift of the amount designated for each level of sponsorship recognition. Exclusive agreements are on a first-come basis and are negotiated separately with the Minnesota FFA Foundation.

Basic Licensing Agreement

For companies who use the FFA emblem for local, regional, or state promotions, a basic licensing agreement is available for the Minnesota FFA Association for a fee of \$500. The word "Minnesota" would need to appear above the FFA emblem.

Guidelines and Contingencies

The Minnesota FFA Foundation Star Partner Program is designed to encourage optimum promotion for your support of Minnesota FFA and Team Ag Ed programs. To assist in helping us reach other promotional strategies of the program, a short list of guidelines has been developed to help communicate the suspense dates necessary for a successful program. To ensure the highest levels of service, trust and integrity, participants are asked to honor the suspense dates for the greatest program rapport.

Once a letter of commitment has been signed and agreed upon, the sponsorship funds must be received within 30 days. If the date is not met, the Minnesota FFA Foundation has the right to refuse further recognition at agreed upon level of sponsorship and may choose to terminate the partnership.

All rules, guidelines, and requirements for usage of the FFA logo, marks and emblems are at the direction of the Minnesota FFA Association as outlined by National FFA policies and procedures for the period of this agreement. A licensing agreement will be provided in conjunction with the Minnesota FFA Association for participating partners. The Minnesota FFA Foundation is a nonprofit organization. Contributions are tax deductible.

Once the Sponsorship Agreement form has been received and processed, you will receive a letter of agreement and confirmation of your participation in the Minnesota FFA Foundation Star Partnership Program. Updates will be sent to you in regard to suspense dates to ensure the rapport of this partnership. Call, write or email (see back) for more information.

NAME AS YOU WANT IT LISTED FOR SPONSORSHIP RECOGNITION _____

TITLE _____

COMPANY _____

ADDRESS _____

CITY _____





STATE/ZIP _____

PHONE #1 _____

PHONE #2 _____

E-MAIL _____

Please select the partnership participation level:

					
ONE STAR \$3,000	TWO STAR \$6,000	THREE STAR \$10,000	FOUR STAR \$15,000	FIVE STAR \$20,000	DISTINGUISHED STAR \$25,000
<input type="checkbox"/>	<input type="checkbox"/>	<input type="checkbox"/>	<input type="checkbox"/>	<input type="checkbox"/>	<input type="checkbox"/>

Year of Sponsorship _____

Basic Licensing Agreement \$500

Please return completed commitment form to:

**Minnesota FFA Foundation
PO Box 365
Plainview, MN 55964
507-534-0188**



Thank You!

Thank you for helping ensure a sound financial future for Minnesota FFA chapters, agricultural education programs and other partners of Minnesota Team Ag Ed. The Minnesota FFA has combined youth, agriculture, and leadership to form well rounded young people who possess these positive life skills necessary to excel. Many will pursue higher education or a profession in the trades and all will have developed skills helping them become productive citizens in their local community. Whatever their path, you can be proud that you helped make it possible, not just for today's students, but for future generations of Minnesotans. When you are proud of something you want to share it! We are proud of our Minnesota FFA and appreciate you joining our efforts by making an investment that is guaranteed to grow.

A SPECIAL PROJECT OF THE MINNESOTA FFA FOUNDATION

Val Aarsvold
Executive Director
Minnesota FFA Foundation
PO Box 365
Plainview, MN 55964
507-534-0188
val.aarsvold@mnffaafoundation.org

For more information visit
mnffaafoundation.org
or call 507-534-0188.

